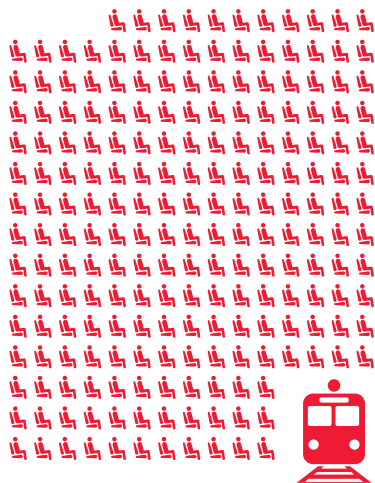


ÖBB compact

Always on the move

**Facts &
Figures**

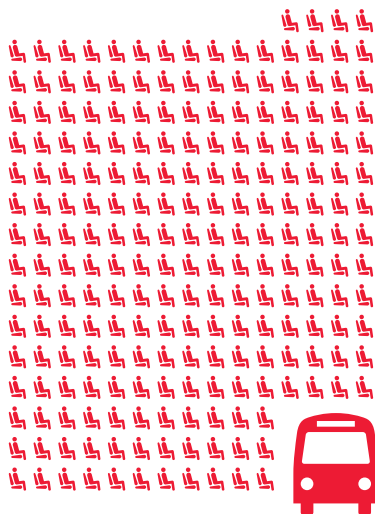
209 mil. regional transport passengers



35 mil. long-distance passengers



217 mil. bus passengers



Passenger figures. In 2016, 461 million passengers used ÖBB mobility services – roughly 209 million of them on local and regional trains, 35 million on long-distance services and 217 million by bus.

FACTS & FIGURES

FOREWORD

Always on the move for you. 40,000 ÖBB employees ensure that around 1.3 million passengers and roughly 300,000 tons of freight arrive safely and punctually at their destination every day. That makes ÖBB Austria's biggest mobility provider, one that makes an important contribution to environmental protection. By moving people and goods by rail, ÖBB saves 3 million tons of CO₂ each year.

A key prerequisite for ÖBB's sustainable train services is the construction and maintenance of a modern railroad infrastructure. With an annual investment of 2.5 billion euro, ÖBB not only creates value for future generations but also ranks among the biggest contracting authorities in the country, making it an important economic factor. ÖBB also puts this importance to the test as an attractive employer. Because ÖBB is one of the biggest employers in Austria and the leader when it comes to technical training. No fewer than 1,700 apprentices are trained at ÖBB every year.

In this "Facts & Figures" booklet, you'll find these and many other exciting details about ÖBB as a company. Take a peek behind the scenes and be impressed by the economic power of ÖBB.

AT THE CUSTOMER'S SERVICE

RIGHT ACROSS AUSTRIA AND EUROPE. ÖBB rail and bus services deliver high-performance and sustainable mobility right across Austria.

Traveling the country

Passengers (per year)	460.8 mil.
Train passengers	244.2 mil.
- of which local transport	209.0 mil.
- of which long-distance transport	35.2 mil.
national	24.1 mil.
international	11.1 mil.
Bus passengers	216.6 mil.
Train passenger kilometers (per year)	11.1 bn.
- of which local transport	5.3 bn.
- of which long-distance transport	5.8 bn.
Freight transported (tons per year)	111.8 mil.
- of which freight traffic*	109.1 mil.
- of which contract logistics	2.7 mil.
Shipments (number)	3.7 mil.
Packages (number)	6.8 mil.
Ton kilometers (per year)	28.8 bn.

* Freight traffic consists of wagonload traffic, container transports and transports of trucks on the rolling highway.



2067 | 1959–1977
27 in fleet, 111 built

Trains (per day)	6,420
- of which local transport*	4,065
- of which long-distance transport*	320
ÖBB trains	277
- of which freight traffic*	1,140
- of which service trains	895

* incl. train operating companies (TOC)

Rapid transit system

Lines Austria-wide (managed by ÖBB)	34
Passengers (per day)	410,850
Lines Vienna/LA/Burgenland (since 1962)	10
Passengers (per day)	216,785
Lines Upper Austria* (since 2016)	4
Passengers (per day)	38,000
Lines Styria** (since 2007)	6
Passengers (per day)	40,275
Lines Carinthia*** (since 2010)	4
Passengers (per day)	19,790
Lines Salzburg (since 2003)	2
Passengers (per day)	22,000
Lines Tyrol (since 2007)	6
Passengers (per day)	42,000
Lines Vorarlberg (since 2011)	2
Passengers (per day)	32,000

* 4 new lines since 11 December 2016, passenger numbers from December 2016

** 2 new lines since 11 December 2016, passenger numbers from January 2017

*** 1 new line since 11 December 2016, passenger numbers from May 2017

Postbus

Kilometers traveled (per year) **145 mil.**

Kilometers traveled (per day) **398,000**

Lines **871**

Bus stops **21,924**

- of which with train connection 680

Passengers in Austria and Czech Republic

(per year) **217 mil.**

- of which scheduled services 88 %

- of which rental car and line-type services 12 %

(ski shuttles, rail replacement buses, private haulage, etc.)

Communities covered **2,002**

Communities covered (share) **95 %**

The Postbus is the sole means of public transport in more than one third of communities covered.

Buses **2,300**

Passengers nationwide (per year) **211 mil.**

Eastern region (Vienna, LA, Burgenland) 63 mil.

Styria 30 mil.

Carinthia 17 mil.

Upper Austria 30 mil.

Salzburg 24 mil.

Tyrol 24 mil.

Vorarlberg 23 mil.



2043 | 1964–1977
10 in fleet, 77 built

Train tickets

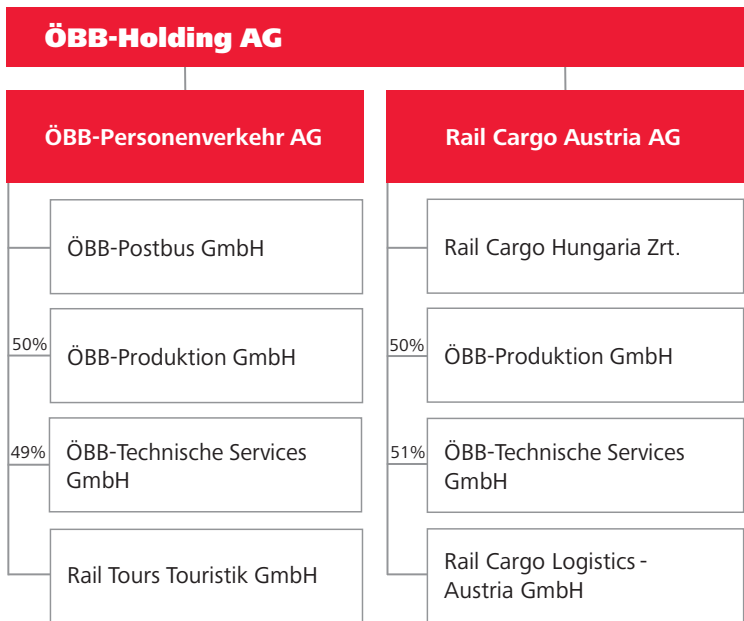
Tickets sold (per year)	39.4 mil.
- of which at ticket machine	59 %
- of which at ticket counter*	23 %
- of which on internet/smartphones/tablets	18 %
SCOTTY app downloads	3.5 mil.
ÖBB app downloads*	550,000
SCOTTY timetable inquiries (per month)	19 mil.
SCOTTY timetable inquiries (per minute)	439
Page views on oebb.at (per month)	3.5 mil.

* Ticket counters/external partners/customer service/lounge/business customer advisors/infra-partners/ÖBB travel agencies

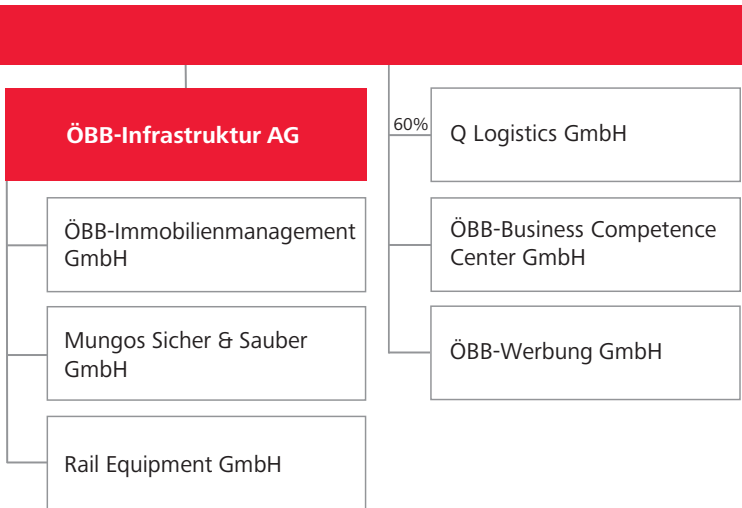


STRUCTURE & ORGANIZATION

ORGANIZATIONAL CHART*. A clear structure for a complex task. Under the umbrella of the holding company, ÖBB is divided into 3 sub-companies.



2143 | 1965–1977
13 in fleet, 77 built



* This organizational chart includes a selection of important companies within the ÖBB Group. Date: 1 August 2017

ON COURSE FOR SUCCESS

THE BUSINESS FIGURES. ÖBB recorded one of the best years in its history in 2016 with a profit of around 166 million euro.

Earnings ratios according to IFRS

Revenue	5,246.8
Total income	6,415.8
Total expenses	5,604.4
Cost of materials and purchased services	1,730.4
Personnel expenses	2,478.5
EBIT	811.4
EBT	166.2

Balance sheet ratios according to IFRS

Balance sheet total	27,344.1
Non-current assets	25,876.8
Current assets	1,467.3
Property, plant and equipment	24,385.7
Equity capital	2,093.1
Equity ratio	7.7 %
Financial liabilities	22,798.8
Gross capital expenditure	2,399.6

(numbers in million euro)



1142 | 1969–1977

Conversion from 1042.5, 66 in fleet, 177 built

Revenues by sub-groups

Sub-group ÖBB-Personenverkehr	2,037.3
Sub-group Rail Cargo Austria	2,079.0
Sub-group ÖBB-Infrastruktur	2,107.8
ÖBB-Holding & other companies	1,303.3
minus consolidation of sub-groups	-2,280.3
Revenues per consolidated financial statement	5,246.8
Other income (consolidated)	1,169.0
Total income	6,415.8

Earnings position of ÖBB-Personenverkehr

Revenues	2,037.3
Total income	2,064.2
Total expenses	-1,961.0
EBT	81.9

Earnings position of Rail Cargo Austria

Revenues	2,079.0
Total income	2,124.0
Total expenses	-2,063.8
EBT	44.3

Earnings position of ÖBB-Infrastruktur

Revenues	2,107.8
Total income	3,154.8
Total expenses	-2,528.2
EBT	49.6

(numbers in million euro)

THE WORLD OF TRAINS

MOBILITY PROVIDER. 461 million passengers traveled on board the trains and buses of ÖBB in 2016. An insight into the numbers of a complex system.

Train rides

Train rides (per year)	2,342,186
- of which passenger trains	1,600,030
Long-distance transport	116,453
Local transport	1,483,577
- of which freight trains	416,045
- of which service trains	326,111

Punctuality

Long-distance passenger transport	87.7 %
Local passenger transport	96.4 %
Passenger transport total	95.9 %

Punctuality threshold

Passenger traffic (minutes)	5
Freight traffic (minutes)	15



1044/1144 | 1978–1995
209 in fleet, 217 built

Systems and operation

Kilometers of track (incl. switch point length)	9,688
Operated length of track (km)*	4,826
- of which single-track	2,721
electrified	1,432
- of which double-track	2,105
electrified	2,105
New stretches of track in operation since 2007 (km) ..	170
Additional new stretches of track by 2026 (km)	280
Traffic control centers	1
Signaling and control centers	5
Signal towers	677
- of which electronic signal towers	286
Train stations and stops	1,069
Bridges	6,344
Tunnels	246
Grade crossings	3,278
Hot box detection systems	267
Avalanche and rock fall guards (km)	198
Noise barriers (km)	887
Shunting sites**	105
Signals	24,786
- of which light signals	22,029
Switch points	13,677
- of which electrically heated	10,361

* State data from page 45 onwards based on track lengths (total 4,683 km)

** 5 of which abroad

Train stations/stops updated by 2016	200
Train stations/stops updated by 2025	270
Platforms (km)	420
Train stations/stops with bathrooms	379
Elevators	668
Escalators	194
Wheelchair elevators	205
PA systems	1,819
Platform emergency call boxes	549
Clocks in customer area approx.	4,000

Average infrastructure investments

2017–2022 (euro per year) approx.	2.5 bn.
average new construction and expansion investments	
2017–2022 (euro per year) approx.	1.9 bn.
average reinvestments	
(incl. P & R and noise control) + repair	
2017–2022 (euro per year) approx.	1.3 bn.

Park & Ride spaces	108,102
- of which car parking spaces	62,451
- of which two-wheeler parking spaces	45,651



1063 | 1983–1991
48 in fleet, 50 built

Passengers with an accessible train station

2016 approx.	75 %
2020	85 %
2025	90 %

Number of train operating companies (TOC)

on the Austrian route network in 2016 **42**

Train kilometers

Train kilometers (per year)	146.1 mil.
- of which passenger traffic	98.3 mil.
ÖBB Group	93.3 mil.
- of which freight traffic	40.5 mil.
ÖBB Group	31.7 mil.
- of which service traffic	7.3 mil.
ÖBB Group	6.1 mil.



Capacity utilization

Trains traveling the ÖBB network at peak times	579
average traveling Mon-Fri 06:00–20:00	483
average traveling Mon-Sun 00:00–24:00	350
Train departures throughout Austria during peak times (per minute)	10

Vehicle fleet

Engines in fleet	1,033
- of which in use	1,000
Coaches	2,646
Freight cars	21,533

Real estate

Buildings	4,496
Building space	
incl. outside rented spaces (m²)	2.7 mil.
Real estate management	23,609
Net land owned by ÖBB (m²)*	193.5 mil.
- of which in Vienna (m ²)	11.8 mil.
Repairs and investment projects (per year)	1,830
Lease and rental contracts (external)	18,100
Technical assets (technology management)	75,700

* The value for net land owned by ÖBB refers to areas managed by IMMO.



1064 | 1984–1990
10 in fleet

COMMUNICATIVE ÖBB

DIALOG. Hardly any other company receives as much attention from the general public as ÖBB. The reason for this is clear communication on all channels.

Press

Press releases (per week)	11
ÖBB reports in the media (per year) ...	26,000 (70/day)

Facebook, YouTube, Instagram etc.

Subscribers to all channels (as at 25 June 2017)	161,473
Video hits (Facebook + YouTube since outset) ...	18.4 mil.
Coverage (people reached with Facebook posts)	85 mil.
- of which in 2016	40.6 mil.
Liked posts (Likes across all channels since outset)	750,478

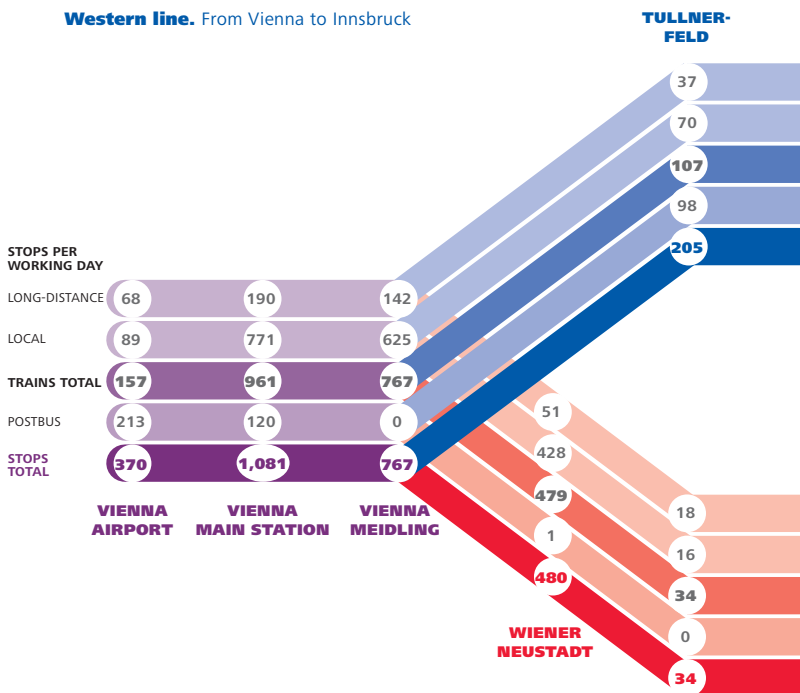
Advertising spaces

Advertising spaces	23,925
- of which train/bus ads	10,500
- of which train station ads	5,200
- of which on engines, trains and buses	3,780
- of which train station and informational advertising spaces	3,200
- of which digital advertising screens	45

WITH THE BEST CONNECTIONS

MOVING AUSTRIA. With a widespread and dense network of connections, ÖBB offers its passengers attractive connection options.

Western line. From Vienna to Innsbruck

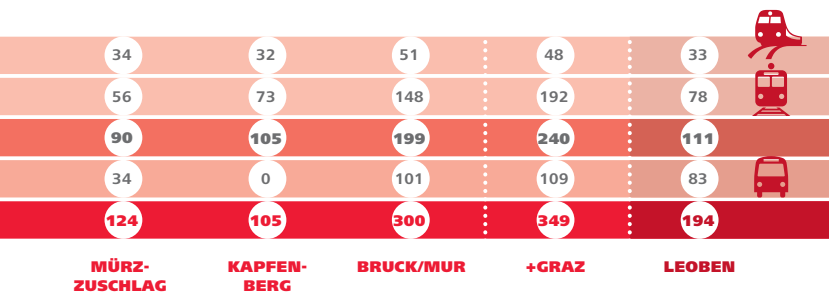
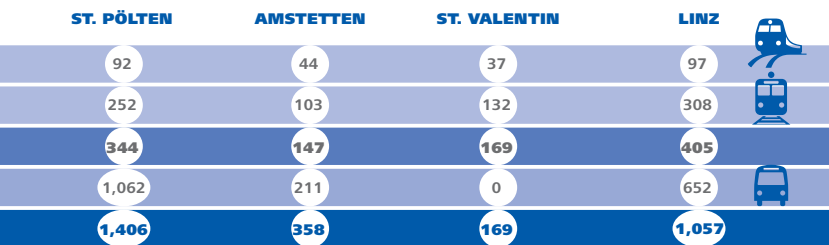


Southern line. From Vienna to Graz or on via Bruck an der Mur to Villach

SEMMERING




Tens of thousands of stops every day

ÖBB ensures that around 1.3 million passengers arrive safely and punctually at their destination each and every day. To achieve this, around 4,000 passenger trains and 870 bus routes are linked into a nationwide public transport network. The graphic below gives an insight into the dense network of connections taking the Southern and Western lines as an example – with our 12,000 train and bus stops as well as boarding, alighting and connection options. →






Long-distance and local services

The Western line is shown horizontally in blue, the Southern line horizontally in red. Listed vertically from top to bottom are the stops for long-distance services, local services, total trains, ÖBB Postbuses and all stops in total on a working day at the individual train stations.

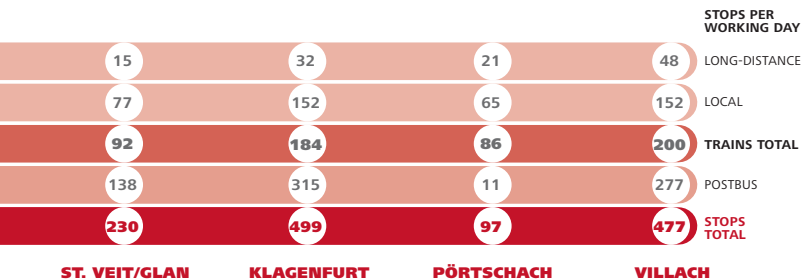
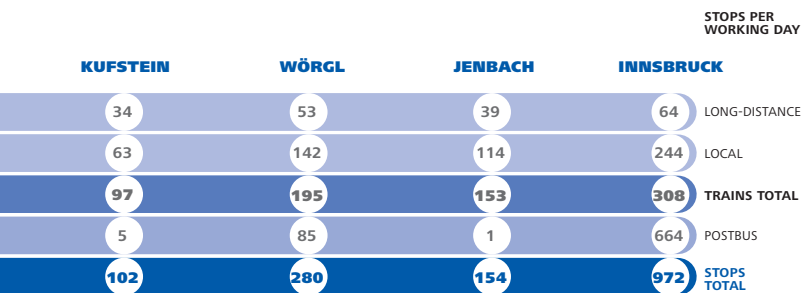
	WELS	ATTNANG- PUCHHEIM	VÖCKLABRUCK	SALZBURG
	53	40	37	115
	145	111	61	189
	198	151	98	304
	131	70	205	545
	329	221	303	849

Western line. From Vienna to Innsbruck

Southern line. From Vienna to Graz or on via Bruck an der Mur to Villach

	15	13	13	7
	44	44	48	51
	59	57	61	58
	164	15	11	33
	223	72	72	91
	KNITTELFELD	JUDENBURG	UNZMARKT	FRIESACH IN CARINTHIA

The graphics impressively show how the long-distance trains on the main lines offer pan-regional mobility and how the trains used for local and regional services as well as buses in the individual regions subsequently ensure an attractive mobility offer.



MOVING FREIGHT

INTERNATIONAL. Between the North Sea, Mediterranean and Black Sea, over 109 million tons of freight are transported reliably and in an environmentally friendly way every year.

Networked in Europe

Total tons transported (per year)	109.1 mil.
- of which conventional wagonload traffic	85.6 mil.
- unaccompanied combined traffic	16.8 mil.
(corresponds to approx. 1.7 mil. Intermodal Transport Units)	
- Rolling highway	6.7 mil.
(corresponds to approx. 189,483 transported trucks)	
Number of trains (per year)	518,329
Train kilometers (per year)	49.4 mil.
Ton kilometers (per year)	28.8 mil.
Modal share of rail in total freight traffic	
in ton-km in Austria	30.7 %

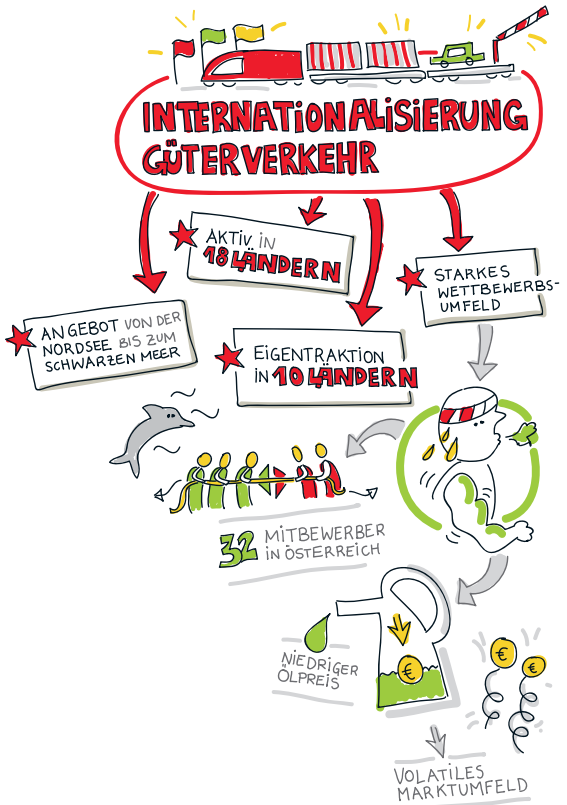
Market shares of the Rail Cargo Group

Austria	74.5 %
Hungary	63.6 %
Bulgaria	3.6 %
Germany	2.8 %



2068 | 1989–1994
58 in fleet, 60 built

Italy	2.9 %
Croatia	8.0 %
Romania	3.9 %
Slovenia	12.3 %
Czech Republic	2.5 %



NETWORKED IN EUROPE

BETWEEN NORTH SEA, MEDITERRANEAN AND BLACK SEA.

The Rail Cargo Group is an international rail logistics specialist in 18 countries in Europe and beyond. A look at the key transport routes and streams.





A COUNTRY OF RAILWAYS

SATISFIED CUSTOMERS. The results of the customer satisfaction analysis as well as the ten most frequented train stations and the busiest in each state.

Austria's busiest train stations

(passenger movements per day)

1 Vienna Main Station (Vienna)	120,000
2 Vienna Meidling	72,134
3 Wien Mitte	56,909
4 Vienna Praterstern	54,871
5 Vienna Floridsdorf	46,577
6 Linz Main Station (UA)	41,951
7 Vienna Handelskai	39,752
8 Wiener Neustadt Main Station (LA)	39,563
9 Innsbruck Main Station (Tyrol)	39,427
10 St. Pölten	32,303

The busiest stations in the other states

12 Salzburg Main Station (Salzburg)	25,658
13 Graz Main Station (Styria)	25,577
19 Klagenfurt Main Station (Carinthia)	14,733
23 Feldkirch train station (Vorarlberg)	12,955
87 Neusiedl am See train station (Burgenland)	3,224



1163 | 1994–1995
20 in fleet

ÖBB customer satisfaction analysis

(school grading system)

Overall grade	2.0
Passengers feel safe on the bus	1.4
Passengers feel safe on the train	1.5
Punctuality of the trains	1.5
Personal advice when booking at the counter	1.6
Regular announcements on the train	1.6
Convenience, travel comfort on the bus	1.6
Train station accessibility	1.7
Cleanliness of trains	1.8
Ticket machine available	1.9
Total trip time, travel time	1.9
Announcements at the train station for incidents	1.9
Suitable connections to other trains	1.9
Bus price-performance ratio	1.9
Information on cell phone, via app	2.0
Cleanliness and state of train stations	2.0
Meals and beverages provided on the train	2.0
Telephone information	2.1
Convenience, travel comfort on the train	2.1
Announcements on the train if delayed	2.1
Train station infrastructure, guidance system	2.2
Train price-performance ratio	2.3
Handling of claims and complaints	3.2

Source: ÖBB customer satisfaction analysis 2016

THE NEW SOUTHERN LINE

INTERNATIONAL AXIS. From Vienna Main Station through the Semmering Base Tunnel and further south on the Koralm railway.

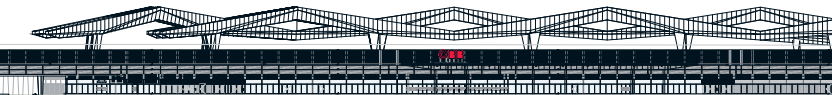
Vienna Main Station

Total area of new bridge construction (m ²)	30,000
Track (km)	100
Switch points	300
Covered island platforms (completely accessible)	5
Platform edges	10
Crossing points of TEN corridors	3
TEN 17, TEN 22, TEN 23	
Connections to rapid transit lines	8
Subway lines	1
Tram lines	3
Bus lines	2

Rail Freight Center Vienna South

Area (ha)	55
Track length (km)*	27
Switch points*	96
Loading track group	1

* refers to full expansion



Gantry cranes	2
Handling capacity full expansion (ITU per year)*	420,000

* ITU – Intermodal Transport Unit

Semmering Base Tunnel

Tunnel length (km)	27.3
Maximum grade (per mil)	8.4
Number of tunnel borings	14
Possible top speed (km/h)	230
Travel time saved (in minutes)	30
Possible towing capacity for one engine (t)	1,600

Koralm railway

Length of Koralm railway (km)	130
Length of Koralm tunnel (km)	33
Number of tunnels (total length 47 km)	11
Newly constructed and updated train stations	23
Lines with limited service or under construction approx.	90 %
Possible top speed (km/h)	250

New speed from 2026

Line	current travel time	future travel time	.. time savings
Vienna–Graz	2:35	1:50	0:45
Vienna–Klagenfurt	3:55	2:40	1:15
Graz–Klagenfurt	2:00*	0:45	1:15

* Bus connection

VIENNA MAIN STATION | 1,100 trains per day



MOVING FORCE

EMPLOYEES. Ultimately, it is the dedication, know-how and experience of the employees that move a company like ÖBB.

Personnel figures

Employees	40,265
- of which general staff and workers	17,791
- of which employees with a permanent position	22,474
Apprentices*/** (= 4 % of ÖBB employees)	1,689
Total	41,954
- of which in Austria*	38,075
- of which abroad	3,879
Employee nationalities (5,215 people without exceptional tariff)	61
Number of job profiles at ÖBB	125

* of which 3 abroad

** A further 136 apprentices in the General Private Foundation for Professional Training

Apprentices

Training workshops	11
Apprentice hostels	4
Apprenticeships*	23

* since 2017: 22 apprenticeships



2070 | 2001–2003
90 in fleet

Apprentices (number)*

Office administrator	52
Finance & accounting assistant	4
Forwarding agent & forwarding logistics	90
Mobility service	78
Railway operating technology	165
Railway safety technology	160
Railway vehicle engineering	0
Railway vehicle maintenance technology	62
Railway transport technology	96
Railway electrical engineering	171
Railway telecommunications technology	49
Electrical engineering – installation & operating tech.	179
Electrical engineering – electro- & building technology**	18
Information & telecommunications technology	26
Electronics – applied electronics	1
Metals technology – mechanical engineering	269
Mechatronics – automation technology	54
Track construction technology	279
Body construction technology/commercial vehicles	3
Automotive engineering/commercial vehicles	1
Automotive engineering & systems electronics	24
Metal working	41
Cleaning technology	2

* incl. foundation apprentices

** no longer offered since 2017

Employees by company

ÖBB-Infrastruktur*	18,048
Rail Cargo Group*	14,366
ÖBB-Personenverkehr*	7,069
Other companies	2,471

* incl. apprentices

The 11 biggest professional groups

Engine driver	4,209
Controller	3,391
Shunting	2,691
Dispatcher	2,502
Rail vehicle technology craft	2,088
Construction technology craft	2,054
Train attendant for ticket inspection	1,208
Scheduling and order processing	829
Control and safety technology craft	829
Electrical engineering craft	715
Storage	715



2016 | 2002–2004
100 in fleet

Internal training and development

ÖBB academy: Employees in training	609
ÖBB academy: Participant days*	3,161.5
ÖBB training: training courses	977
ÖBB training: Participant days*	15,243

* Number of participants x duration of training in days



18 Rail Freight Center Vienna South

Multi-function freight terminal at the junction between the Pottendorf line and the S1 expressway. **P:** 246 mil. euro, **C:** 2017

19 Vienna–Wiener Neustadt (Pottendorf line)

Two-track expansion of the existing line to relieve the Southern line. **P:** 673 mil. euro, **C:** 2023

20 Ebenfurth

Faster to Vienna with the Ebenfurth loop.
P: 182 mil. euro, **C:** 2025

21 Müllendorf

Direct from Eisenstadt to Vienna in 45 minutes with the Müllendorf and Ebenfurth loop. **P:** 22 mil. euro, **C:** 2019

22 Semmering Base Tunnel

Construction of a 27 km two tube tunnel, reducing travel time Vienna–Graz: 30 minutes **P:** 3,320 mil. euro, **C:** 2026

23 Bruck a. d. Mur–Graz

Optimization of the infrastructure between Bruck a. d. Mur and Graz as part of the new Southern line. **P:** 205 mil. euro, **C:** 2023

24 Graz–Weitendorf

Needs-based expansion of the Koralm railway between Graz and Weitendorf. **P:** 363 mil. euro, **C:** 2023

25 Koralm railway Graz–Klagenfurt

New 130 km section as part of the new Southern line, time gained: 2 hours 11 minutes. **P:** 5,180 mil. euro, **C:** 2023

26 Karawanks Tunnel

Update of the Karawanks Tunnel including increase in tunnel safety. **P:** 73 mil. euro*, **C:** 2022

* Share of Austria

Austria: Line & station project

Infrastructure projects ÖBB master plan (RPL) 2017–2022



approx. € **1 bn.**
RPL 2017-2022
Increase in safety

ETCS expansion
BFS continuation
Construction of train tracking
check points
Conversion of grade crossings



approx. € **580 mil.**
per year
in maintenance



approx. € **600 mil.**
per year
in reinvestment



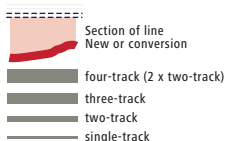
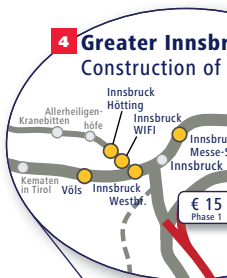
approx. € **30 mil.**
per year
Construction > 2,000 car parking spaces
Construction > 1,000 Bike & Ride parking spaces



approx. € **170 mil.**
RPL 2017-2022
Terminals (Vienna South, Wels, Wolfurt, Linz)



approx. € **70 mil.**
RPL 2017-2022
Expansion of WLAN, mobile communications



S

uck
stps



mil. | 2020

tirol

Volders

Brennero/Brenner

Brenner Base Tunnel
€ 4.960 mil. | 2026

- Station/stop
New/conversion (in planning)
 - Station/stop
New/conversion (under construction)
 - Station/stop
- ➔ TEN-T Core Network Corridors

Linz Kleinmünchen-Linz Main Station
4-track expansion
€ 444 mil. |
2026 onwards

Linz-Wels
4-track expansion
€ 997 mil. |
2026 onwards

Linz Freight Station
Stadthafen
Modernization
Freight tracks
€ 44 mil. | 2020

Linz-Sum
Improvement
€ 76 mil.

Wels-Passau
Modernization
€ 205 mil. | 2022

Brenner Northern Approach
€ 49 mil. | Planning

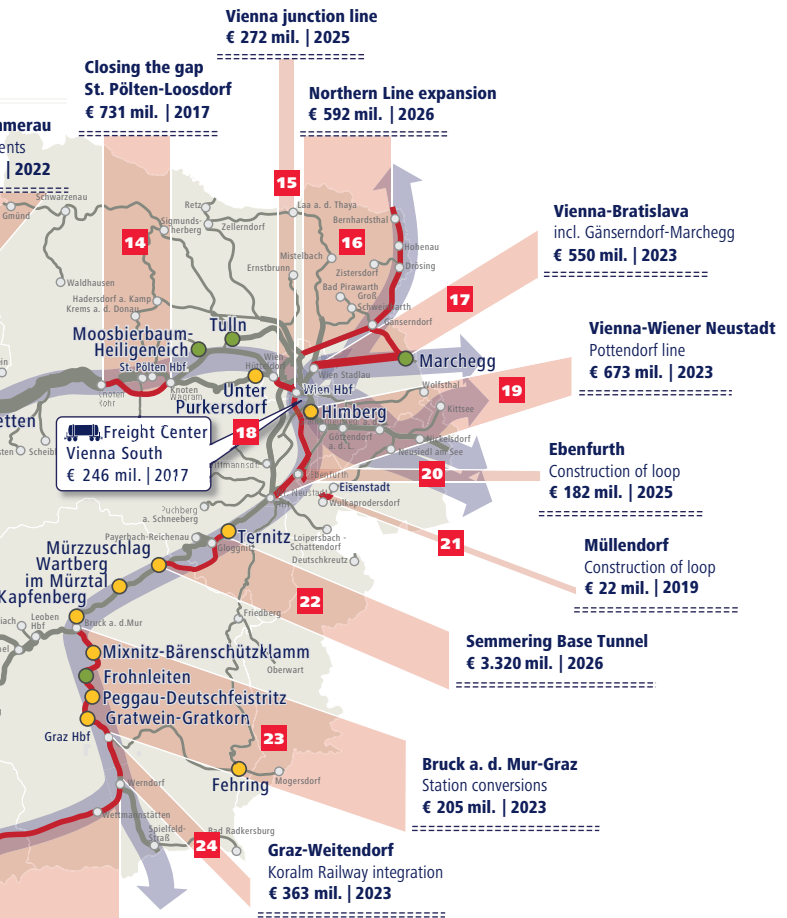
Wels Freight Station Terminal
€ 35 mil. | 2019

East Tyrol | Phase1
Expansion suitable
for local transport
€ 58 mil. | 2020

Karawanks Tunnel
€ 73 mil. | 2022

Koralmbahn
€ 5.180 mil. | 2026





TEN-T core network in Austria

Scandinavia-Mediterranean Corridor with the Brenner Base Tunnel (TEN 1)

Rhine-Danube Corridor with the Western line at its center (TEN 17)

Orient/East-Mediterranean Corridor (TEN 22)

Baltic-Adriatic Corridor with Semmering Base Tunnel and Koraln railway (TEN 23)

Graz-Klagenfurt
23

9 Wels–Passau

Expansion of the approx. 80 km-long existing line including remodeling of train stations and ETCS. **P:** 205 mil. euro, **C:** 2022

10 Linz–Wels

Four-track expansion of the Western line between Linz and Wels. **P:** 997 mil. euro, **C:** 2026 onwards

11 Linz Stadthafen shunting station

Update for freight traffic through conversion/expansion of the tracks and electrification. **P:** 44 mil. euro, **C:** 2020

12 Linz Kleinmünchen–Linz Main Station

Through-connection of the four-tracked Western line. **P:** 444 mil. euro, **C:** 2026 onwards

13 Linz–Summerau

Update of the line and of 7 train stations. **P:** 76 mil. euro, **C:** 2022

14 Closing the gap: St. Pölten–Loosdorf

Reduce traffic for the city of St. Pölten with a freight train bypass and an increase in capacity. **P:** 731 mil. euro, **C:** 2017

15 Vienna junction line

Increase appeal of the rapid transit train with 15 minute intervals; new stops. **P:** 272 mil. euro, **C:** 2025

16 Northern line expansion

Expansion of the line to the Czech border. **P:** 592 mil. euro, **C:** 2026

17 Vienna–Bratislava

The existing line from Vienna to Bratislava will be selectively expanded to two tracks and electrified. **P:** 550 mil. euro, **C:** 2023

Construction projects Austria*

1 St. Margrethen–Lauterach

Expansion for local traffic, new stop at Lauterach West.

Project volume (P): 184 mil. euro, **completion (C):** 2020

2 Rail Freight Center Wolfurt

Raising the capacity of Wolfurt as a rail freight location and improving the transport connection. **P:** 62 mil. euro, **C:** 2018

3 Feldkirch–state border

FL.A.CH. Short-distance transport expansion in the border region with Liechtenstein and Switzerland. **P:** 159 mil. euro, **C:** 2025

4 Greater Innsbruck

Planning and construction of new rapid transit stops for improving the local transport offer. **P:** 15 mil. euro, **C:** 2020

5 Brenner Base Tunnel (BBT)

Construction of a 55 km two-tube tunnel by 2026.

P: 4,960 mil. euro**, **C:** 2026

6 Brenner northern approach

Planning of an efficient, environmentally friendly approach from Germany to the BBT. **P:** 49 mil. euro, **C:** Planning

7 East Tyrol | Phase 1

Update of Lienz station, making the Drautal railway more appealing. **P:** 58 mil. euro, **C:** 2020

8 Wels shunting station

Redesign of the approach/departure as well as track extensions and construction of a through terminal. **P:** 35 mil. euro, **C:** 2019

* Source: bmvit – Master Plan 2017–2022

** share of Austria

SUSTAINABLE TRANSPORT

POWER & ENVIRONMENTAL PROTECTION. Electricity is the key power source for rail operations. 90 percent of the electricity used by ÖBB is renewable energy.

Energy management & climate protection

Electricity provided (GWh per year)	2,252
Traction current provided (GWh per year)	1,835

Electricity

Generation of traction current

from hydropower	90 %
from other renewable energy sources	2 %
from natural gas	8 %

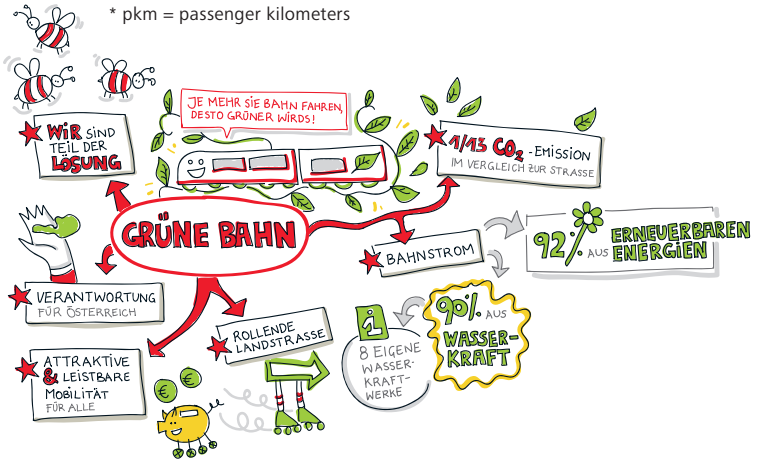
Energy & emissions saved

Energy saved vs. 2011 (GWh)	185
ÖBB climate balance – total greenhouse gas emissions of ÖBB: CO ₂ equivalent (t per year)	387,382
Greenhouse gas emissions saved through ÖBB rail transport (t CO ₂ per year)	3 mil.
CO ₂ emissions of ÖBB passenger transport (g/pkm*)	14.2
CO ₂ emissions of ÖBB freight transport (g/tkm*)	5.7

* pkm = passenger kilometers / tkm = ton kilometers

CO ₂ emissions Postbus (g/pkm*)	76
CO ₂ emissions for ÖBB passenger services vs. car/airplane	1 : 13/1 : 28

* pkm = passanger kilometers



EUROPE'S RAILROADS

VIEW OVER THE BORDER. Austria also comes out on top compared with the rest of Europe. We are the hardest working train drivers in the EU and in second place in Europe.

The European rail transport market

Countries	24
Track kilometers 24 countries	205,538 km
- of which electrified 22 countries	112,223 km
Train kilometers 22 countries	4.15 bn.
- of which passenger transport	81.6 %
- of which freight traffic	18.4 %
Passenger kilometers 21 countries	432 bn.
Ton kilometers 24 countries	392 bn.

Comparison of European rail use

Annual distance traveled by train per capita in kilometers

Switzerland	2,449
Austria	1,427
France	1,387
Sweden	1,293
Denmark	1,203
Germany	1,121
United Kingdom	1,020



1216 | 2006–2008
50 in fleet

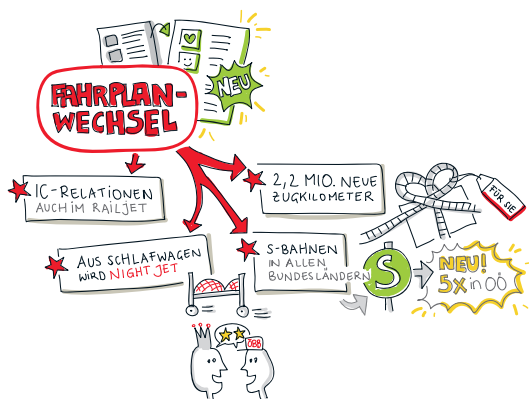
EU average	937
Italy	833
Hungary	772
Finland	750

Average rail travel costs of passenger transport

(cents per passenger kilometer)

Great Britain	19.2
EU average	10.7
France	10.4
Germany	9.1
Spain	8.1
Austria	8.0
Latvia	4.9
Croatia	3.9

Source: IRG-Rail Market Monitoring Report, March 2017 (data from 2015)



ECONOMIC DRIVER

ECONOMIC FACTOR RAIL. The rail sector is a driving force in Austria's economy – as a principal, as an engine of innovation, as an employer ...

The entire rail system

(ÖBB, private railroads, railroad industry)

Employees	54,000
Revenue (euro)	8.4 bn.

Railroad investments create added value

Total added value effects of the master plan (billion)

Total gross added value 2014–2019	11,350
direct added value	5,223
indirect added value	5,241

Railroad investments create jobs

Annual jobs in Austria

2014–2019 during construction	168,310
direct employment	93,658
indirect employment	64,616
Full-time employment per year	
during construction	24,000

Source: Economica Institute studies, 2013/2014



Railjet | 2007–2016
60 units in operation

ÖBB IN THE STATES. FACTS & FIGURES

Moving Austria. ÖBB is the key mobility provider for local and regional transport. We take a look at the key figures for the individual states and compare them with nationwide figures.



BURGENLAND



SMALL BUT NICE. About 292,000 people live in Burgenland on an area of 3,965 km² – over seven percent of which is bodies of water.

Traveling by train

Local transport passengers	3.168 mil.
Local transport trains per day	257
Rapid transit lines*	1
Rapid transit trains per day	48
Local transport train kilometers (in km)	2.186 mil.
Local transport passenger kilometers	134.9 mil.
Freight transported (tons per year)	0.954 mil.

* Total number of rapid transit lines in the eastern region (Vienna, LA, Burgenland): 10 (some cross over national borders)

** As at: 5 April 2017

The Postbus is running

Passengers	9.0 mil.
Lines	45
Buses	148



NEUSIEDL/SEE TRAIN STATION | 3,224 passengers
No. 1 in Burgenland, no. 87 nationwide
(see page 26)

Stops	853
communities covered	155
communities covered (share)	91 %
Kilometers traveled	6.8 mil.

Infrastructure

Line length (length in km)	156
Train stations and stops	29
Parking spaces	3,896
- of which for cars	2,696
- of which for two-wheelers	1,200
Grade crossings	109
- of which public	104
- of which private	5
Shunting sites	0

Infrastructure investments in 2017 (in euro) **6 mil.**

Investment volume according to 2017–2022 master plan incl. reinvestments + P & R + noise control (in euro) approx.	93 mil.
---	---------

Employees

Employees	380
- of which female	8
Apprentices	2
- of which female apprentices	0

CARINTHIA



AUSTRIA'S SOUTH. Our southernmost state has a population of about 561,000 on an area of 9,535 km² - incl. the Grossglockner, Austria's highest peak.

Traveling by train

Local transport passengers	7.725 mil.
Local transport trains per day	267
Rapid transit lines	4
Rapid transit trains per day	190
Local transport train kilometers (in km)	4.735 mil.
Local transport passenger kilometers	252.1 mil.
Freight transported (tons per year)	6.118 mil.

* As at: 5 April 2017

The Postbus is running

Passengers	17.0 mil.
Lines	75
Buses	176
Stops	2,484
communities covered	131
communities covered (share)	99 %
Kilometers traveled	10.6 mil.



KLAGENFURT TRAIN STATION | 14,733 passengers
No. 1 in Carinthia, no. 19 nationwide
(see page 26)

Infrastructure

Line length (length in km)	510
Train stations and stops	109
Parking spaces	6,149
- of which for cars	3,646
- of which two-wheelers	2,503
Grade crossings	342
- of which public	270
- of which private	72
Shunting sites	11

Infrastructure investments in 2017 (in euro) **280 mil.**

Investment volume according to 2017–2022 master plan incl. reinvestments + P & R + noise control (in euro) approx.	1.9 bn.
---	---------

Employees

Employees	2,894
- of which female	205
Apprentices	13
- of which female	5

LOWER AUSTRIA



DIVERSE. With an area of a little over 19,000 km², Lower Austria is the largest state by area. About 1.66 million people live here.

Traveling by train

Local transport passengers	48.588 mil.
Local transport trains per day	1,788
Rapid transit lines*	9
Rapid transit trains per day**	620
Local transport train kilometers (in km)	24.533 mil.
Local transport passenger kilometers	2,227.3 mil.
Freight transported (tons per year)	17.526 mil.

* Total number of rapid transit lines in the eastern region (Vienna, LA, Burgenland): 10 (some cross over national borders)

** As at: 5 April 2017

The Postbus is running

Passengers	44.2 mil.
Lines	203
Buses	485
Stops	5,897
communities covered	563
communities covered (share)	98 %
Kilometers traveled	31.9 mil.



WIENER NEUSTADT MAIN STATION

39,563 passengers, no. 1 in Lower Austria, no. 8 nationwide (see page 26)

Infrastructure

Line length (length in km)	1,455
Train stations and stops	346
Parking spaces	51,814
- of which for cars	33,024
- of which for two-wheelers	18,790
Grade crossings	1,339
- of which public	1,140
- of which private	199
Shunting sites	23

Infrastructure investments in 2017 (in euro) **464 mil.**

Investment volume according to 2017–2022 master plan incl. reinvestments + P & R + noise control (in euro) approx.	3.3 bn.
---	---------

Employees

Employees	5,611
- of which female	267
Apprentices	140
- of which female	8

UPPER AUSTRIA



THE CENTER OF INDUSTRY. About 1.47 million people live in Upper Austria on an area of about 12,000 km², and about half of them live in the Linz metropolitan area.

Traveling by train

Local transport passengers	16.2 mil.
Local transport trains per day	609
Rapid transit lines	4
Rapid transit trains per day*	198
Local transport train kilometers (in km)	10.540 mil.
Local transport passenger kilometers	543.6 mil.
Freight transported (tons per year)	25.175 mil.

* As at: 5 April 2017

The Postbus is running

Passengers	30.3 mil.
Lines	195
Buses	406
Stops	3,798
communities covered	425
communities covered (share)	96 %
Kilometers traveled	28.0 mil.



LINZ MAIN STATION | 41,951 passengers
No. 1 in Upper Austria, no. 6 nationwide
(see page 26)

Infrastructure

Line length (length in km)	862
Train stations and stops	223
Parking spaces	15,858
- of which for cars	8,270
- of which for two-wheelers	7,588
Grade crossings	776
- of which public	539
- of which private	237
Shunting sites	20

Infrastructure investments in 2017 (in euro) **180 mil.**

Investment volume according to 2017–2022 master plan
incl. reinvestments + P & R + noise control (in euro)
approx. 1.7 bn.

Employees

Employees	5,398
- of which female	395
Apprentices	283
- of which female	22

SALZBURG



CITY, MOUNTAINS, LAKES. The centrally located state extends from the foothills of the Alps to the central Alps. Around 549,000 people live here on an area of around 7,150 km².

Traveling by train

Local transport passengers	7.0 mil.
Local transport trains per day	227
Rapid transit lines	2
Rapid transit trains per day*	128
Local transport train kilometers (in km)	3.710 mil.
Local transport passenger kilometers	207.4 mil.
Freight transported (tons per year)	2.405 mil.

* As at: 5 April 2017

The Postbus is running

Passengers	24.1 mil.
Lines	94
Buses	279
Stops	1,859
communities covered	117
communities covered (share)	98 %
Kilometers traveled	14.6 mil.



SALZBURG MAIN STATION | 25,658 passengers
No. 1 in Salzburg, no. 12 nationwide
(see page 26)

Infrastructure

Line length (length in km)	234
Train stations and stops	59
Parking spaces	5,562
- of which for cars	2,158
- of which for two-wheelers	3,404
Grade crossings	61
- of which public	49
- of which private	12
Shunting sites	6

Infrastructure investments in 2017 (in euro) **71 mil.**

Investment volume according to 2017–2022 master plan incl. reinvestments + P & R + noise control (in euro) approx.	470 mil.
---	----------

Employees

Employees	2,401
- of which female	153
Apprentices	120
- of which female	13

STYRIA



THE GREEN ONE. At about 16,400 km², Styria is Austria's second largest state, and its population of 1.24 million puts it in fourth place.

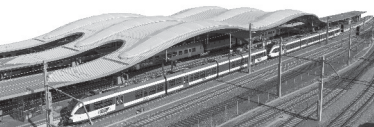
Traveling by train

Local transport passengers	10.8 mil.
Local transport trains per day	387
Rapid transit lines	6
Rapid transit trains per day*	273
Local transport train kilometers (in km)	7.266 mil.
Local transport passenger kilometers	328.1 mil.
Freight transported (tons per year)	17.882 mil.

* As at: 5 April 2017

The Postbus is running

Passengers	29.8 mil.
Lines	126
Buses	242
Stops	3,461
communities covered	256
communities covered (share)	89 %
Kilometers traveled	17.4 mil.



GRAZ MAIN STATION | 25,577 passengers
No. 1 in Styria, no. 13 nationwide
(see page 26)

Infrastructure

Line length (length in km)	749
Train stations and stops	124
Parking spaces	11,900
- of which for cars	6,796
- of which for two-wheelers	5,104
Grade crossings	442
- of which public	386
- of which private	56
Shunting sites	20

Infrastructure investments in 2017 (in euro) **348 mil.**

Investment volume according to 2017–2022 master plan incl. reinvestments + P & R + noise control (in euro) approx.	2.8 bn.
---	---------

Employees

Employees	4,232
- of which female	246
Apprentices	303
- of which female	45

TYROL



AMIDST THE ALPS. Tyrol has the longest external border of 719 km. The area within the border is 12,640 km² and home to 746,000 people.

Traveling by train

Local transport passengers	14.3 mil.
Local transport trains per day	349
Rapid transit lines	6
Rapid transit trains per day*	243
Local transport train kilometers (in km)	6.917 mil.
Local transport passenger kilometers	576.0 mil.
Freight transported (tons per year)	16.572 mil.

* As at: 5 April 2017

The Postbus is running

Passengers	23.6 mil.
Lines	87
Buses	328
Stops	2,020
communities covered	267
communities covered (share)	96 %
Kilometers traveled	20.3 mil.



INNSBRUCK MAIN STATION

39,427 passengers, no. 1 in Tyrol,
no. 9 nationwide (see page 26)

Infrastructure

Line length (length in km)	420
Train stations and stops	95
Parking spaces	7,372
- of which for cars	3,842
- of which for two-wheelers	3,530
Grade crossings	128
- of which public	124
- of which private	4
Shunting sites	7

Infrastructure investments in 2017 (in euro) **247 mil.**

Investment volume according to 2017–2022 master plan
incl. reinvestments + P & R + noise control (in euro)
approx. 3.0 bn.

Employees

Employees	3,168
- of which female	145
Apprentices	146
- of which female	17

VORARLBERG



AUSTRIA'S WEST. About 389,000 people live between Arlberg and Lake Constance on an area of about 2,600 km².

Traveling by train

Local transport passengers	12.2 mil.
Local transport trains per day	193
Rapid transit lines	2
Rapid transit trains per day*	136
Local transport train kilometers (in km)	2.838 mil.
Local transport passenger kilometers	292.4 mil.
Freight transported (tons per year)	3.522 mil.

* As at: 5 April 2017

The Postbus is running

Passengers	23.0 mil.
Lines	31
Buses	144
Stops	1,122
communities covered	87
communities covered (share)	91 %
Kilometers traveled	9.7 mil.



FELDKIRCH TRAIN STATION | 12,955 passengers
No. 1 in Vorarlberg, no. 23 nationwide
(see page 26)

Infrastructure

Line length (length in km)	111
Train stations and stops	31
Parking spaces	3,082
- of which for cars	888
- of which for two-wheelers	2,194
Grade crossings (incl. Liechtenstein)	30
- of which public	27
- of which private	3
Shunting sites	3

Infrastructure investments in 2017 (in euro) **80 mil.**

Investment volume according to 2017–2022 master plan
incl. reinvestments + P & R + noise control (in euro)
approx. 356 mil.

Employees

Employees	1,158
- of which female	124
Apprentices	90
- of which female	12

VIENNA



THE NATION'S CAPITAL. A city and state in one, it has the biggest population on the smallest area – 1.87 million people on around 415 km².

Traveling by train

Local transport passengers	89.003 mil.
Local transport trains per day	1,410
Rapid transit lines*	10
Rapid transit trains per day**	890
Local transport train kilometers (in km)	7.380 mil.
Local transport passenger kilometers	762.6 mil.
Freight transported (tons per year)	7.139 mil.

* Total number of rapid transit lines in the eastern region (Vienna, LA, Burgenland): 10 (some cross over national borders)

** As at: 5 April 2017

The Postbus is running

Passengers	10.2 mil.
Lines	15
Buses	92
Stops	430
communities covered	1
communities covered (share)	100 %
Kilometers traveled	5.8 mil.



Infrastructure

Line length (length in km)	186
Train stations and stops	51
Parking spaces	2,469
- of which for cars	1,131
- of which for two-wheelers	1,338
Grade crossings	51
- of which public	47
- of which private	4
Shunting sites	10

Infrastructure investments in 2017 (in euro) **108 mil.**

Investment volume according to 2017–2022 master plan
incl. reinvestments + P & R + noise control (in euro)
approx. 659 mil.

Employees

Employees	11,147
- of which female	1,977
Apprentices	589
- of which female	122

ÖBB TRAIN UNITS

LONG-DISTANCE



Railjet (seven unit)

Length incl. traction unit in m 206
 Seats 408



Nightjet (3–11 coaches)

Length incl. traction unit in m 99–310
 Seats* 156–588

* Standard, couchette and sleeping car places

LOCAL AND REGIONAL TRAFFIC



Talent 4023 (three unit)
Talent 4024/4124 (four unit)

Length in m 52/67
 Seats 151/199



Desiro 5022

Length in m 42
 Seats 117

PASSENGER TRANSPORT. The key ÖBB train units for long-distance traffic as well as for local and regional traffic at a glance.



Weight incl. traction unit in t	446	Number	60
Top speed in km/h	230		



Weight incl. traction unit in t	233–680	Number of standard (52), couchette (74) and sleeping cars (52)*	178
Top speed in km/h*	200		

* with car transporter units 160

* plus 36 car transporter units



Weight in t	95/115/117	Power in kW	1,440/1,520
Top speed in km/h	140	Number	187



Weight in t	71	Power in kW	2 x 315
Top speed in km/h	120	Number	60

LOCAL & REGIONAL TRAFFIC. Train units for commuter services on lines throughout Austria.



Cityjet - Desiro ML (since Dec. 2015)

Length in m	75
Seats	244 (rapid transit system)/
.....	259 (regional train)

LOCAL AND REGIONAL TRAFFIC



CityShuttle push-pull train CRD

Length (per car) in m	26
Seats in control car	44
Seats in intermediate car	80



Double-stack push-pull car DOSTO

Length (per car) in m	27
Seats in control car	86
Seats in intermediate car	114



4020 - Vienna rapid transit system (three unit)

Length in m	69
Seats	184



Weight in t	146	Number	37
Top speed in km/h	160	Number (to 02/2018)	101
Power in kW	2,600	Number (to 06/2019)	165



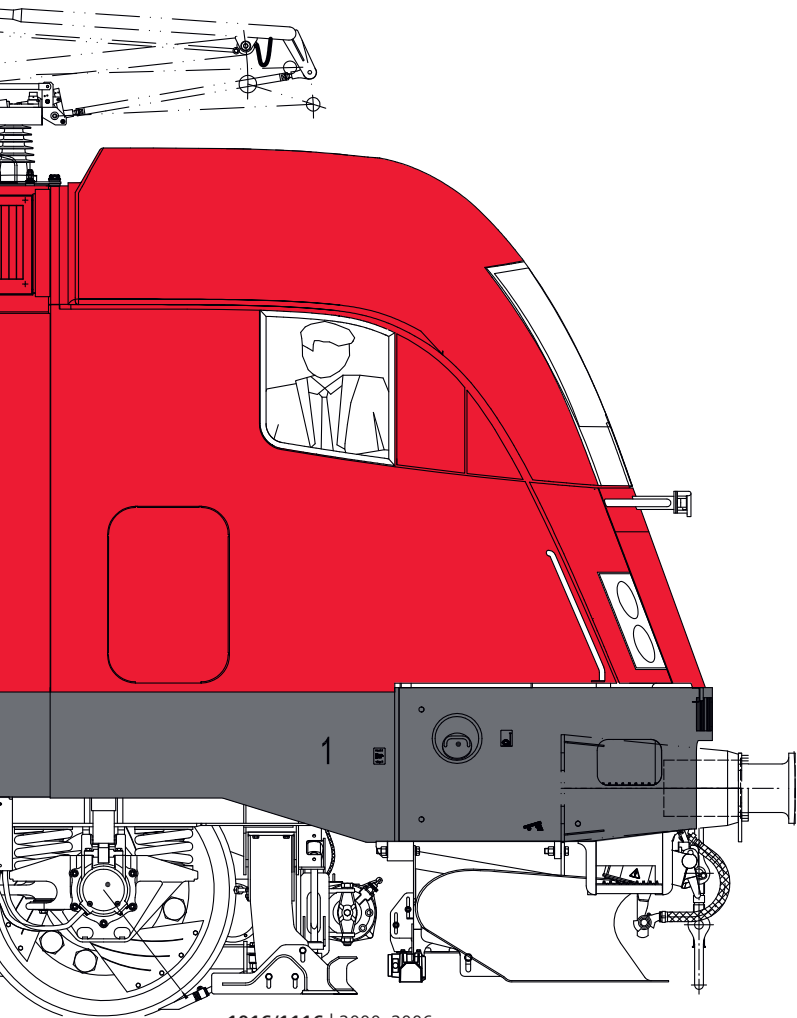
Weight of control car in t	40	Top speed in km/h	160
Weight of intermediate car in t	37	Number (control car)	120



Weight of control car in t	51	Top speed in km/h	140
Weight of intermediate car in t	48	Number (control car)	67



Weight in t	129	Power in kW	1,200
Top speed in km/h	120	Number	103



1016/1116 | 2000–2006
50/282 in fleet

ÖBB ENGINES*

Traction unit series 2067

(drawing see page 4)

Number	27 in fleet, 111 built
Manufacturer	Simmering-Graz-Pauker (SGP)
Year of manufacture	1959–1977
Wheel arrangement	C dh
Tank capacity in l	1,600
Drive power in kW	442
Top speed in km/h	65
Total weight in t	49
Length over buffers in m	10.5

Series 1042.0 (1042.5)

Number	0 in fleet, 257 built
Manufacturer	SGP
Year of manufacture	1963–1965 (1969–1977)
Wheel arrangement	B0'B0'
Drive power in kW	3,560 (4,000)
Top speed in km/h	130 (150)
Total weight in t	84
Length over buffers in m	16.2

Series 2043 (p. 6)

Number	10 in fleet, 77 built
Manufacturer	Jenbacher Werke
Year of manufacture	1964–1977
Tank capacity in l	1,700
Drive power in kW	1,104
Top speed in km/h	110
Total weight in t	70
Length over buffers in m	01-04: 14.8; 05-ff: 15.8

Series 2143 (p. 8)

Number	13 in fleet, 77 built
Manufacturer	SGP
Year of manufacture	1965–1977
Wheel arrangement	B'B'
Tank capacity in l	2,045
Drive power in kW	1,115
Top speed in km/h	110
Total weight in t	65

Length over buffers in m

15.8

Series 1142 (p. 10)

Number	Conversion from 1042.5
Manufacturer	66 in fleet, 177 built
Manufacturer	SGP, Conversion: ÖBB-TS
Year of manufacture	1969–1977
Wheel arrangement	B0'B0'
Drive power in kW	4,000
Top speed in km/h	150
Total weight in t	83
Length over buffers in m	16.2

Series 1044/1144 (p. 12)

Number	209 in fleet, 217 built
MFG	SGP, Conversion: ÖBB-TS
Year of manufacture	1978–1995
Wheel arrangement	B0'B0'
Drive power in kW	5,280
Top speed in km/h	160
Total weight in t	84
Length over buffers in m	16.1

Series 1063 (p. 14)

Number	48 in fleet, 50 built
MFG	BBC, ELIN, SGP, Siemens
Year of manufacture	1983–1991
Wheel arrangement	B0'B0'
Drive power in kW	1,520
Top speed in km/h	100
Total weight in t	82
Length over buffers in m	15.6

Series 1064 (p. 16)

Number	10 suspended
MFG	BBC, ELIN, SGP, Siemens
Year of manufacture	1984–1990
Wheel arrangement	C0'C0'
Drive power in kW	1,560
Top speed in km/h	100
Total weight in t	112
Length over buffers in m	18.5

Series 2068 (p. 22)

Number	58 in fleet, 60 built
Manufacturer	Jenbacher Werke
Year of manufacture	1989–1994
Wheel arrangement	B'B' dh
Tank capacity in l	1,500
Drive power in kW	820
Top speed in km/h	100
Total weight in t	72
Length over buffers in m	13.8

Series 1822

Number	0 in fleet, 5 built
MFG	SGP, BBC, Siemens
Year of manufacture	1991
Wheel arrangement	B0'B0'
Drive power in kW	4,400
Top speed in km/h	140
Total weight in t	83
Length over buffers in m	19.3

Series 1014

Number	0 in fleet, 18 built
MFG	BBC, ELIN, SGP, Siemens
Year of manufacture	1993–1994
Wheel arrangement	B0'B0'
Drive power in kW	3,000
Top speed in km/h	160
Total weight in t	74
Length over buffers in m	17.5

Series 1163 (p. 26)

Number	20 in fleet
MFG	BBC, ELIN, SGP, Siemens
Year of manufacture	1994–1995
Wheel arrangement	B0'B0'
Drive power in kW	1,560
Top speed in km/h	100
Total weight in t	80.5
Length over buffers in m	16.4

Series 1016 Taurus (p. 68)

Number	50 in fleet
Manufacturer	Siemens Austria
Year of manufacture	2000–2001
Wheel arrangement	B0'B0'
Drive power in kW	6,400

Top speed in km/h	230
Total weight in t	86
Length over buffers in m	19.3

Series 1116 Taurus (p. 68)

Number	282 in fleet
Manufacturer	Siemens Austria
Year of manufacture	2000–2006
Drive power in kW	6,400
Top speed in km/h	230
Total weight in t	86
Length over buffers in m	19.3

Series 2070 Hector (p. 30)

Number	90 in fleet
Manufacturer	Vossloh
Year of manufacture	2001–2003
Wheel arrangement	B'B'
Tank capacity in l	3,000
Drive power in kW	745
Top speed in km/h	100
Total weight in t	72
Length over buffers in m	14.1

Series 2016 Herkules (p. 32)

Number	100 in fleet
Manufacturer	Siemens Austria
Year of manufacture	2002–2004
Wheel arrangement	B0'B0'
Tank capacity in l	2,800
Drive power in kW	2,000
Top speed in km/h	140
Total weight in t	80
Length over buffers in m	19.3

Series 1216 Taurus (p. 42)

Number	50 in fleet
Manufacturer	Siemens Austria
Year of manufacture	2006–2008
Wheel arrangement	B0'B0' de
Drive power in kW	6,000
Top speed in km/h	230
Total weight in t	87
Length over buffers in m	19.6

* In order of year of manufacture

ONE YEAR, ONE PICTURE. We captured our activities in 2016 in a graphic recording. The result is a kind of mind map of our last year as well as a glimpse of the future – all in one illustration. You can find the whole picture on the back of the ÖBB financial report for 2016. You can also see excerpts of it on the back of this booklet and on several pages inside it.



About this report

Media Owner & Publisher

ÖBB-Holding AG
Corporate Communication
Mag. Sven Pusswald
Am Hauptbahnhof 2, 1100 Vienna

Project management

Dieter Marek

Design & realization

Matthias Flödl & Sebastian Treytl

Editorial

Matthias Flödl, communicators and
press spokespeople of ÖBB

Illustrations

Manuel Böhm, Michael Ambrosch/
ÖBB-Werbung, Graphic recording:
VerVieVas/Sophie Wilhelm

Translation & Proofreading

Interlingua Language Services-ILS

Production

ÖBB-Werbung GmbH
Production no. 111017-1557

Print & Production

Druckerei Paul Gerin

5th Issue /1st Edition
© 2017, ÖBB-Holding AG

All information from 2016 (unless
otherwise specified), typographical and
printing errors reserved.

